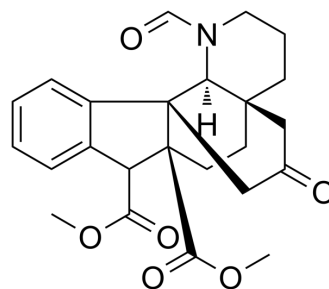


11,12-De(methylenedioxy)danuphylline

Cat. No.:	HY-N1013
CAS No.:	888482-17-5
Molecular Formula:	C ₂₄ H ₂₇ NO ₆
Molecular Weight:	425.47
Target:	Others
Pathway:	Others
Storage:	Please store the product under the recommended conditions in the Certificate of Analysis.



BIOLOGICAL ACTIVITY

Description	11,12-De(methylenedioxy)danuphylline is an indole alkaloid compound isolated from the leaves and stems of <i>Kopsia officinalis</i> ^[1] .
--------------------	--

REFERENCES

[1]. Wang ZW, et al. Three novel indole alkaloids from *Kopsia officinalis*. *Fitoterapia*. 2017;119:8-11.

Caution: Product has not been fully validated for medical applications. For research use only.

Tel: 609-228-6898

Fax: 609-228-5909

E-mail: tech@MedChemExpress.com

Address: 1 Deer Park Dr, Suite Q, Monmouth Junction, NJ 08852, USA