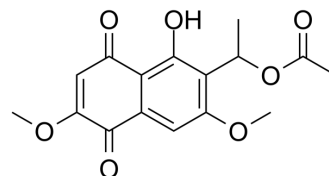


2,7-Dimethoxy-6-(1-acetoxyethyl)juglone

Cat. No.:	HY-N10200
CAS No.:	68594-15-0
Molecular Formula:	C ₁₆ H ₁₆ O ₇
Molecular Weight:	320.29
Target:	Others
Pathway:	Others
Storage:	Please store the product under the recommended conditions in the Certificate of Analysis.



BIOLOGICAL ACTIVITY

Description

2,7-Dimethoxy-6-(1-acetoxyethyl)juglone is a naphthoquinone derivative found in the fungus *Kirschsteiniothelia* species^[1].

REFERENCES

[1]. Poch GK, et al. New bioactive metabolites from a freshwater isolate of the fungus *Kirschsteiniothelia* sp. *J Nat Prod.* 1992;55(8):1093-1099.

Caution: Product has not been fully validated for medical applications. For research use only.

Tel: 609-228-6898

Fax: 609-228-5909

E-mail: tech@MedChemExpress.com

Address: 1 Deer Park Dr, Suite Q, Monmouth Junction, NJ 08852, USA