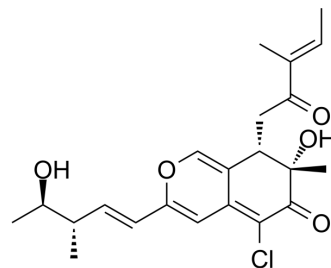


## 11-epi-Chaetomugilin I

Cat. No.:	HY-N10206
CAS No.:	1319729-88-8
Molecular Formula:	C <sub>22</sub> H <sub>27</sub> ClO <sub>5</sub>
Molecular Weight:	406.9
Target:	Endogenous Metabolite
Pathway:	Metabolic Enzyme/Protease
Storage:	Please store the product under the recommended conditions in the Certificate of Analysis.



### BIOLOGICAL ACTIVITY

Description	11-epi-Chaetomugilin I is a metabolite found in <i>Chaetomium globosum</i> . 11-epi-Chaetomugilin I exhibits significant cytotoxic activity against the murine P388 leukemia cell line, the human HL-60 leukemia cell line, the murine L1210 leukemia cell line, and the human KB epidermoid carcinoma cell line <sup>[1]</sup> .
IC <sub>50</sub> & Target	Microbial Metabolite

### REFERENCES

[1]. Yamada T, et al. New class azaphilone produced by a marine fish-derived *Chaetomium globosum*. The stereochemistry and biological activities. *Bioorg Med Chem*. 2011;19(13):4106-4113.

**Caution: Product has not been fully validated for medical applications. For research use only.**

Tel: 609-228-6898

Fax: 609-228-5909

E-mail: tech@MedChemExpress.com

Address: 1 Deer Park Dr, Suite Q, Monmouth Junction, NJ 08852, USA