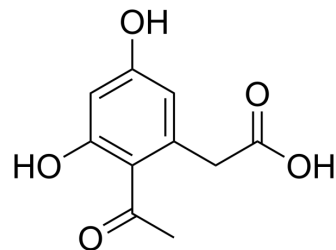


Curvulinic acid

Cat. No.:	HY-N10260
CAS No.:	19053-94-2
Molecular Formula:	C ₁₀ H ₁₀ O ₅
Molecular Weight:	210.18
Target:	Others
Pathway:	Others
Storage:	Please store the product under the recommended conditions in the Certificate of Analysis.



BIOLOGICAL ACTIVITY

Description	Curvulinic acid is a phytotoxic compound, has herbicidal activity ^[1] .
In Vitro	The activity of Curvulinic acid on seed germination and seedling growth of <i>Capsella bursa-pastoris</i> is evaluated. Curvulinic acid has stronger inhibitory effects on root length than shoot length ^[1] . MCE has not independently confirmed the accuracy of these methods. They are for reference only.

REFERENCES

[1]. Jun Li, et al. Herbicidal activity of curvulinic acid isolated from *Nimbya alternantherae*. *Nat Prod Commun*. 2012 Jan;7(1):51-2.

Caution: Product has not been fully validated for medical applications. For research use only.

Tel: 609-228-6898

Fax: 609-228-5909

E-mail: tech@MedChemExpress.com

Address: 1 Deer Park Dr, Suite Q, Monmouth Junction, NJ 08852, USA