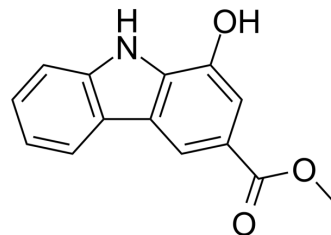


Clausine E

Cat. No.:	HY-N10340
CAS No.:	182261-83-2
Molecular Formula:	C ₁₄ H ₁₁ NO ₃
Molecular Weight:	241.24
Target:	Others
Pathway:	Others
Storage:	Please store the product under the recommended conditions in the Certificate of Analysis.



BIOLOGICAL ACTIVITY

Description

Clausine E, is a alkaloid which can be isolated from *Clausena excavata*, is a inhibitor of fat mass and obesity-associated protein (FTO) demethylase. Clausine E shows inhibitory activities against proliferation of synoviocytes and cancer cells.

REFERENCES

- [1]. Wang Y, Li J, Han X, et al. Identification of Clausine E as an inhibitor of fat mass and obesity-associated protein (FTO) demethylase activity. *J Mol Recognit.* 2019;32(10):e2800.
- [2]. Guo JM, Yu XM, Jiang B, et al. *Zhongguo Zhong Yao Za Zhi.* 2021;46(17):4438-4445.
- [3]. Liger F, Popowycz F, Besson T, Picot L, Galmarini CM, Joseph B. Synthesis and antiproliferative activity of clausine E, mukonine, and koenoline bioisosteres. *Bioorg Med Chem.* 2007;15(16):5615-5619.

Caution: Product has not been fully validated for medical applications. For research use only.

Tel: 609-228-6898

Fax: 609-228-5909

E-mail: tech@MedChemExpress.com

Address: 1 Deer Park Dr, Suite Q, Monmouth Junction, NJ 08852, USA