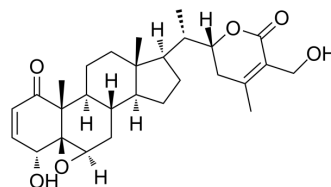


4-epi-Withaferin A

Cat. No.:	HY-N10352
CAS No.:	1214886-27-7
Molecular Formula:	C ₂₈ H ₃₈ O ₆
Molecular Weight:	470.6
Target:	Others
Pathway:	Others
Storage:	Please store the product under the recommended conditions in the Certificate of Analysis.



BIOLOGICAL ACTIVITY

Description

4-epi-Withaferin A (compound 28) is the analogue of Withaferin A. 4-epi-Withaferin A enhances cytotoxicity and cytoprotective heat-shock-inducing activity (HSA). 4-epi-Withaferin A has the potential for the research of protein aggregation-associated diseases by stimulating cellular defense mechanisms^[1].

REFERENCES

[1]. Wijeratne EM, et al. Structure-activity relationships for withanolides as inducers of the cellular heat-shock response. *J Med Chem.* 2014;57(7):2851-2863.

Caution: Product has not been fully validated for medical applications. For research use only.

Tel: 609-228-6898

Fax: 609-228-5909

E-mail: tech@MedChemExpress.com

Address: 1 Deer Park Dr, Suite Q, Monmouth Junction, NJ 08852, USA