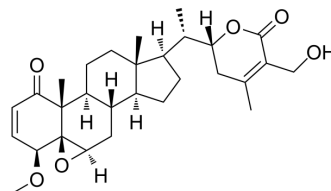


## 4-Methyl withaferin A

Cat. No.:	HY-N10353
CAS No.:	1777780-94-5
Molecular Formula:	C <sub>29</sub> H <sub>40</sub> O <sub>6</sub>
Molecular Weight:	484.62
Target:	Others
Pathway:	Others
Storage:	Please store the product under the recommended conditions in the Certificate of Analysis.



### BIOLOGICAL ACTIVITY

<b>Description</b>	4-Methyl withaferin A is a withaferin A-analogue with anti-tumor activity <sup>[1]</sup> .
<b>In Vitro</b>	Methyl withaferin A is against HeLa cell, A-549 cell, and MCF-7 cells with IC <sub>50</sub> values of 2.1±0.01 μM, 4.0±0.5 μM, and 1.1±0.2 μM, respectively. MCE has not independently confirmed the accuracy of these methods. They are for reference only.

### REFERENCES

[1]. Gabriel G Llanos, et al. Structure-based design, synthesis, and biological evaluation of withaferin A-analogues as potent apoptotic inducers. *Eur J Med Chem.* 2017 Nov 10;140:52-64.

**Caution: Product has not been fully validated for medical applications. For research use only.**

Tel: 609-228-6898

Fax: 609-228-5909

E-mail: tech@MedChemExpress.com

Address: 1 Deer Park Dr, Suite Q, Monmouth Junction, NJ 08852, USA