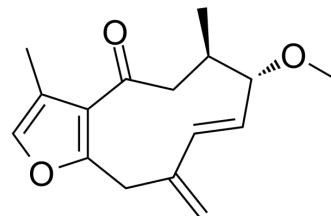


(1E)-3-Methoxy-8,12-epoxygermacra-1,7,10,11-tetraen-6-one

Cat. No.:	HY-N10383
CAS No.:	383368-26-1
Molecular Formula:	C ₁₆ H ₂₀ O ₃
Molecular Weight:	260.33
Target:	Others
Pathway:	Others
Storage:	Please store the product under the recommended conditions in the Certificate of Analysis.



BIOLOGICAL ACTIVITY

Description

(1E)-3-Methoxy-8,12-epoxygermacra-1,7,10,11-tetraen-6-one (Compound 4) is a natural compound which can be derived from resins obtained from *Commiphora sphaerocarpa*^[1].

REFERENCES

[1]. Dekebo A, et al. Furanosquiterpenes from *Commiphora sphaerocarpa* and related adulterants of true myrrh. *Fitoterapia*. 2002 Feb;73(1):48-55.

Caution: Product has not been fully validated for medical applications. For research use only.

Tel: 609-228-6898

Fax: 609-228-5909

E-mail: tech@MedChemExpress.com

Address: 1 Deer Park Dr, Suite Q, Monmouth Junction, NJ 08852, USA