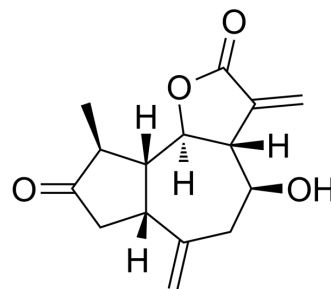


Grosshemin

Cat. No.:	HY-N10412
CAS No.:	22489-66-3
Molecular Formula:	C ₁₅ H ₁₈ O ₄
Molecular Weight:	262.3
Target:	Others
Pathway:	Others
Storage:	Please store the product under the recommended conditions in the Certificate of Analysis.



BIOLOGICAL ACTIVITY

Description

Grosshemin (Grosshemine) is a natural compound found in the Siberian population of *Centaurea scabiosa*^[1].

REFERENCES

[1]. E. A. Krasnov, et al. Isolation of grosshemin from the Siberian population of *Centaurea scabiosa*. *Chem Nat Compd* 42, 495-496 (2006).

Caution: Product has not been fully validated for medical applications. For research use only.

Tel: 609-228-6898

Fax: 609-228-5909

E-mail: tech@MedChemExpress.com

Address: 1 Deer Park Dr, Suite Q, Monmouth Junction, NJ 08852, USA