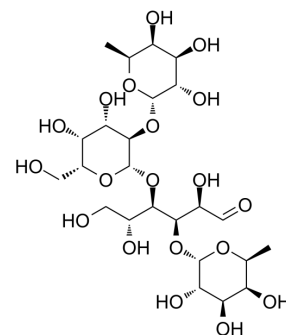


Lactodifucotetraose

Cat. No.:	HY-N10530		
CAS No.:	20768-11-0		
Molecular Formula:	C ₂₄ H ₄₂ O ₁₉		
Molecular Weight:	634.58		
Target:	Others		
Pathway:	Others		
Storage:	Powder	-20°C	3 years
		4°C	2 years
	In solvent	-80°C	6 months
		-20°C	1 month



BIOLOGICAL ACTIVITY

Description

Lactodifucotetraose (Difucosyllactose) is a tetrasaccharide isolated from human milk. Lactodifucotetraose constitutes of D-glucose, 1 D-galactose, and L-fucose^[1].

REFERENCES

[1]. Kuhn, et al. The lactodifucotetraose of human milk: a contribution to the structural specificity of the blood group substance Leb (Lewis factor b). *Justus Liebigs Annalen der Chemie*. Volume: 611. Pages: 249-53. Journal 1958.

Caution: Product has not been fully validated for medical applications. For research use only.

Tel: 609-228-6898

Fax: 609-228-5909

E-mail: tech@MedChemExpress.com

Address: 1 Deer Park Dr, Suite Q, Monmouth Junction, NJ 08852, USA