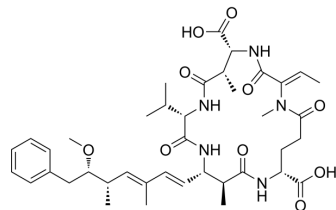


Motuporin

Cat. No.:	HY-N10583
CAS No.:	141672-08-4
Molecular Formula:	C ₄₀ H ₅₇ N ₅ O ₁₀
Molecular Weight:	767.91
Target:	Others
Pathway:	Others
Storage:	Please store the product under the recommended conditions in the Certificate of Analysis.



BIOLOGICAL ACTIVITY

Description

Motuporin is a cyclic peptide. Motuporin was initially isolated from *T. swinhoei*^[1].

REFERENCES

[1]. Clark, et al. An Antifungal Cyclodepsipeptide, Cyclolithistide A, from the Sponge *Theonella swinhoei*. *The Journal of Organic Chemistry*, (1998). 63(24), 8757–8764.

Caution: Product has not been fully validated for medical applications. For research use only.

Tel: 609-228-6898

Fax: 609-228-5909

E-mail: tech@MedChemExpress.com

Address: 1 Deer Park Dr, Suite Q, Monmouth Junction, NJ 08852, USA