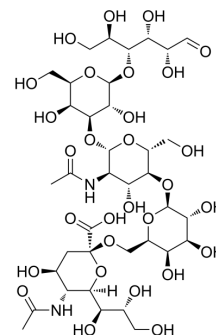


## LSTc

<b>Cat. No.:</b>	HY-N10633
<b>CAS No.:</b>	64003-55-0
<b>Molecular Formula:</b>	C <sub>37</sub> H <sub>62</sub> N <sub>2</sub> O <sub>29</sub>
<b>Molecular Weight:</b>	998.88
<b>Target:</b>	Others
<b>Pathway:</b>	Others
<b>Storage:</b>	Please store the product under the recommended conditions in the Certificate of Analysis.



## BIOLOGICAL ACTIVITY

<b>Description</b>	LSTc (LS-tetrasaccharide c) is a human lactooligosaccharide presents on glycoproteins and glycolipids. LSTc is also a specific human JC polyomavirus (JCV) recognition motif. LSTc has good potential for the study of progressive multifocal leukoencephalopathy (PML) <sup>[1]</sup> .								
<b>In Vitro</b>	<p>LSTc specifically engaged by JCV and inhibits JCV infection in SVG-A cells<sup>[1]</sup>.  MCE has not independently confirmed the accuracy of these methods. They are for reference only.  Cell Viability Assay<sup>[1]</sup></p> <table border="1"> <tr> <td>Cell Line:</td> <td>SVG-A cells</td> </tr> <tr> <td>Concentration:</td> <td>5 mM (pretreat LSTc with JCV, then JCV-LST complexes are added to cells)</td> </tr> <tr> <td>Incubation Time:</td> <td>1 h</td> </tr> <tr> <td>Result:</td> <td>Inhibited JCV infection.</td> </tr> </table>	Cell Line:	SVG-A cells	Concentration:	5 mM (pretreat LSTc with JCV, then JCV-LST complexes are added to cells)	Incubation Time:	1 h	Result:	Inhibited JCV infection.
Cell Line:	SVG-A cells								
Concentration:	5 mM (pretreat LSTc with JCV, then JCV-LST complexes are added to cells)								
Incubation Time:	1 h								
Result:	Inhibited JCV infection.								

## REFERENCES

[1]. Neu U, et al. Structure-function analysis of the human JC polyomavirus establishes the LSTc pentasaccharide as a functional receptor motif. Cell Host Microbe. 2010 Oct 21;8(4):309-19.

---

**Caution: Product has not been fully validated for medical applications. For research use only.**

Tel: 609-228-6898

Fax: 609-228-5909

E-mail: [tech@MedChemExpress.com](mailto:tech@MedChemExpress.com)

Address: 1 Deer Park Dr, Suite Q, Monmouth Junction, NJ 08852, USA