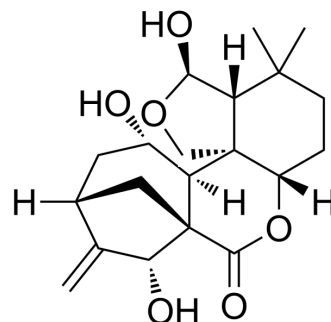


Epinodosinol

Cat. No.:	HY-N10641
CAS No.:	27548-88-5
Molecular Formula:	C ₂₀ H ₂₈ O ₆
Molecular Weight:	364.43
Target:	Others
Pathway:	Others
Storage:	Please store the product under the recommended conditions in the Certificate of Analysis.



BIOLOGICAL ACTIVITY

Description	Epinodosinol is a diterpenoid derived from plant <i>Rabdosia angustifolia</i> . Epinodosinol has inhibitory activity against certain cancer cells ^[1] .	
In Vitro	Epinodosinol (0-100 μM; 48 h) exhibits inhibitory activities against HepG2, GLC-82 and HL-60 cells ^[1] . MCE has not independently confirmed the accuracy of these methods. They are for reference only.	
	Cell Cytotoxicity Assay ^[1]	
	Cell Line:	HepG2, GLC-82 and HL-60 cells
	Concentration:	0-100 μM
	Incubation Time:	48 h
	Result:	Exhibited inhibitory activities against HepG2, GLC-82 and HL-60 cells with IC ₅₀ s of 77.19 ± 0.33 μM, 59.44 ± 6.67 μM and 38.61 ± 2.77 μM, respectively.

REFERENCES

[1]. Ding L, Liu B, et al. Comparison of cytotoxicity and DNA damage potential induced by ent-kaurene diterpenoids from *Isodon* plant. *Nat Prod Res.* 2011 Sep;25(15):1402-11.

Caution: Product has not been fully validated for medical applications. For research use only.

Tel: 609-228-6898

Fax: 609-228-5909

E-mail: tech@MedChemExpress.com

Address: 1 Deer Park Dr, Suite Q, Monmouth Junction, NJ 08852, USA