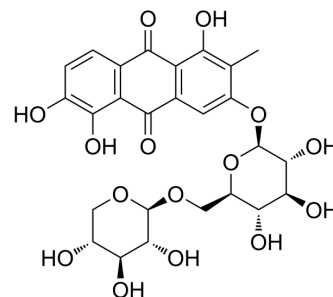


PTP1B-IN-20

Cat. No.:	HY-N10648
Molecular Formula:	C ₂₆ H ₂₈ O ₁₅
Molecular Weight:	580.49
Target:	Phosphatase
Pathway:	Metabolic Enzyme/Protease
Storage:	Please store the product under the recommended conditions in the Certificate of Analysis.



BIOLOGICAL ACTIVITY

Description	PTP1B-IN-20 is a selective inhibitor of protein tyrosine phosphatase 1B (PTP1B; IC ₅₀ =1.05 μM) over the highly homologous T-cell protein tyrosine phosphatase (TCPTP; IC ₅₀ =78.0 μM), which is a key target for type 2 diabetes inhibition ^[1] .
IC ₅₀ & Target	IC ₅₀ : 1.05 μM (PTP1B); 78.0 μM (TCPTP) ^[1]
In Vitro	PTP1B-IN-20 (compound 4) (0-100 μM; 15 min; 37 °C) with 5,6-dihydroxyl groups is more potent than the positive control Na ₃ VO ₄ (IC ₅₀ = 2.94 μM) ^[1] . MCE has not independently confirmed the accuracy of these methods. They are for reference only.

REFERENCES

[1]. Zhang Z, et al. Selective Inhibition of PTP1B by New Anthraquinone Glycosides from Knoxia valerianoides. J Nat Prod. 2022 Nov 18.

Caution: Product has not been fully validated for medical applications. For research use only.

Tel: 609-228-6898

Fax: 609-228-5909

E-mail: tech@MedChemExpress.com

Address: 1 Deer Park Dr, Suite Q, Monmouth Junction, NJ 08852, USA