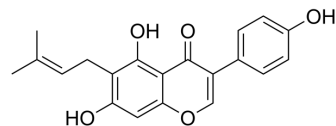


Wighteone

Cat. No.:	HY-N1073		
CAS No.:	51225-30-0		
Molecular Formula:	C ₂₀ H ₁₈ O ₅		
Molecular Weight:	338.35		
Target:	Others		
Pathway:	Others		
Storage:	Powder	-20°C	3 years
		4°C	2 years
	In solvent	-80°C	6 months
		-20°C	1 month



SOLVENT & SOLUBILITY

In Vitro	DMSO : 100 mg/mL (295.55 mM; Need ultrasonic)			
		Solvent Concentration	Mass	
			1 mg	5 mg
			10 mg	
Preparing Stock Solutions	1 mM	2.9555 mL	14.7776 mL	29.5552 mL
	5 mM	0.5911 mL	2.9555 mL	5.9110 mL
	10 mM	0.2956 mL	1.4778 mL	2.9555 mL
Please refer to the solubility information to select the appropriate solvent.				
In Vivo	<ol style="list-style-type: none"> Add each solvent one by one: 10% DMSO >> 40% PEG300 >> 5% Tween-80 >> 45% saline Solubility: ≥ 2.5 mg/mL (7.39 mM); Clear solution Add each solvent one by one: 10% DMSO >> 90% (20% SBE-β-CD in saline) Solubility: ≥ 2.5 mg/mL (7.39 mM); Clear solution Add each solvent one by one: 10% DMSO >> 90% corn oil Solubility: ≥ 2.5 mg/mL (7.39 mM); Clear solution 			

BIOLOGICAL ACTIVITY

Description	Wighteone is a compound isolated from the aerial parts of <i>Genista ephedroides</i> ^[1] .
-------------	---

REFERENCES

[1]. Pistelli L, et al. Flavonoids from *genista ephedroides*. J Nat Prod. 1998;61(11):1404-1406.

Caution: Product has not been fully validated for medical applications. For research use only.

Tel: 609-228-6898

Fax: 609-228-5909

E-mail: tech@MedChemExpress.com

Address: 1 Deer Park Dr, Suite Q, Monmouth Junction, NJ 08852, USA