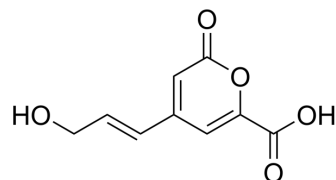


Arabidopyl alcohol

Cat. No.:	HY-N10744
CAS No.:	1400234-92-5
Molecular Formula:	C ₉ H ₈ O ₅
Molecular Weight:	196.16
Target:	Others
Pathway:	Others
Storage:	Please store the product under the recommended conditions in the Certificate of Analysis.



BIOLOGICAL ACTIVITY

Description

Arabidopyl alcohol is a natural product obtained from *Betula pendula* bark^[1].

REFERENCES

[1]. Nadine Strehmel, et al. Extraction of natural products from bark of *Betula pendula* using ionic liquids. *Metabolomics* volume 13, Article number: 135 (2017)

Caution: Product has not been fully validated for medical applications. For research use only.

Tel: 609-228-6898

Fax: 609-228-5909

E-mail: tech@MedChemExpress.com

Address: 1 Deer Park Dr, Suite Q, Monmouth Junction, NJ 08852, USA