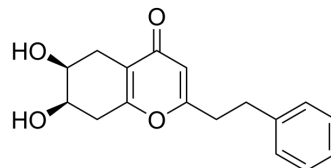


6,7-Dihydroxy-2-(2-phenylethyl)-5,6,7,8-tetrahydrochromone

Cat. No.:	HY-N10752
CAS No.:	626236-07-5
Molecular Formula:	C ₁₇ H ₁₈ O ₄
Molecular Weight:	286.32
Target:	Others
Pathway:	Others
Storage:	Please store the product under the recommended conditions in the Certificate of Analysis.



BIOLOGICAL ACTIVITY

Description

6,7-Dihydroxy-2-(2-phenylethyl)-5,6,7,8-tetrahydrochromone is a natural chromone derivative found in withered wood of *Aquilaria sinensis*^[1].

REFERENCES

[1]. Toru Yagura, et al. Four new 2-(2-phenylethyl)chromone derivatives from withered wood of *Aquilaria sinensis*. *Chem Pharm Bull (Tokyo)*. 2003 May;51(5):560-4.

Caution: Product has not been fully validated for medical applications. For research use only.

Tel: 609-228-6898

Fax: 609-228-5909

E-mail: tech@MedChemExpress.com

Address: 1 Deer Park Dr, Suite Q, Monmouth Junction, NJ 08852, USA