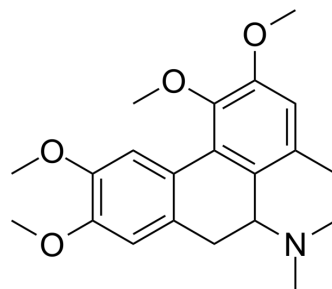


## 2,3,5,6-Tetramethoxyaporphine

Cat. No.:	HY-N10824
CAS No.:	5630-11-5
Molecular Formula:	C <sub>21</sub> H <sub>25</sub> NO <sub>4</sub>
Molecular Weight:	355
Target:	Others
Pathway:	Others
Storage:	Please store the product under the recommended conditions in the Certificate of Analysis.



### BIOLOGICAL ACTIVITY

#### Description

2,3,5,6-Tetramethoxyaporphine is an antitussive agent, a medically valuable benzyl isoquinoline alkaloid. 2,3,5,6-Tetramethoxyaporphine can be isolated from the yellow hornpoppy, *Glaucium flavum* Cr. (Fam. Papaveraceae)<sup>[1][2]</sup>.

### REFERENCES

[1]. Mohamed ME, et al. Plant germination and production of callus from the yellow hornpoppy (*Glaucium flavum*): the first stage of micropropagation. *Pharmazie*. 2014 Sep;69(9):715-20.

[2]. Redpath JB, et al. Double-blind comparison of the respiratory and sedative effects of codeine phosphate and (+/-)-glaucine phosphate in human volunteers. *Br J Clin Pharmacol*. 1982 Oct;14(4):555-8.

**Caution: Product has not been fully validated for medical applications. For research use only.**

Tel: 609-228-6898

Fax: 609-228-5909

E-mail: tech@MedChemExpress.com

Address: 1 Deer Park Dr, Suite Q, Monmouth Junction, NJ 08852, USA