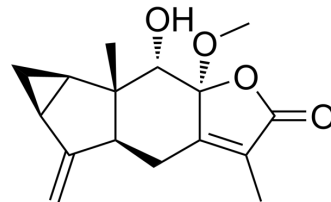


8-epi-Chlorajapolide F

Cat. No.:	HY-N10876
CAS No.:	863301-69-3
Molecular Formula:	C ₁₆ H ₂₀ O ₄
Molecular Weight:	276.33
Target:	Others
Pathway:	Others
Storage:	Please store the product under the recommended conditions in the Certificate of Analysis.



BIOLOGICAL ACTIVITY

Description

8-epi-Chlorajapolide F (compound 1) a sesquiterpene that can be isolated from the aboveground part of the *Chloranthus japonicus*. 8-epi-Chlorajapolide has few cytotoxic to human cancer cell lines NCI-H460 and SMMC-7721 (IC₅₀s > 50 µg/mL)^[1].

REFERENCES

[1]. Zhang M, et al. Sesquiterpenes from the aerial part of *Chloranthus japonicus* and their cytotoxicities. *Fitoterapia*. 2012 Dec;83(8):1604-9.

Caution: Product has not been fully validated for medical applications. For research use only.

Tel: 609-228-6898

Fax: 609-228-5909

E-mail: tech@MedChemExpress.com

Address: 1 Deer Park Dr, Suite Q, Monmouth Junction, NJ 08852, USA