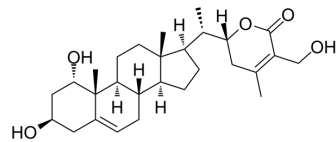


Sominone

Cat. No.:	HY-N10889
CAS No.:	98569-64-3
Molecular Formula:	C ₂₈ H ₄₂ O ₅
Molecular Weight:	458.63
Target:	Others
Pathway:	Others
Storage:	Please store the product under the recommended conditions in the Certificate of Analysis.



BIOLOGICAL ACTIVITY

Description

Sominone is a withanolide. Sominone can be isolated from the herbs of *Withania somnifera*^[1].

REFERENCES

[1]. Atta-ur-Rahman, et al. Two new withanolides from *withania somnifera*.

Caution: Product has not been fully validated for medical applications. For research use only.

Tel: 609-228-6898

Fax: 609-228-5909

E-mail: tech@MedChemExpress.com

Address: 1 Deer Park Dr, Suite Q, Monmouth Junction, NJ 08852, USA