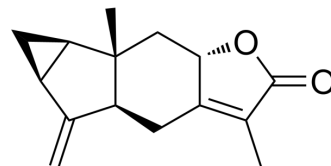


## Shizukanolide

Cat. No.:	HY-N10912
CAS No.:	70578-36-8
Molecular Formula:	C <sub>15</sub> H <sub>18</sub> O <sub>2</sub>
Molecular Weight:	230.3
Target:	Others
Pathway:	Others
Storage:	Please store the product under the recommended conditions in the Certificate of Analysis.



### BIOLOGICAL ACTIVITY

#### Description

Shizukanolide, a sesquiterpene lactone, can be isolated from *Chloranthus japonicus* (Chloranthaceae). The dehydro-compound of Shizukanolide, shows moderate antifungal activity<sup>[1]</sup>.

### REFERENCES

[1]. Kawabata J, et al. Isolation and structural elucidation of four sesquiterpenes from *Chloranthus japonicus* (Chloranthaceae). *Agricultural and Biological Chemistry*, 1981, 45(6): 1447-1453.

**Caution: Product has not been fully validated for medical applications. For research use only.**

Tel: 609-228-6898

Fax: 609-228-5909

E-mail: tech@MedChemExpress.com

Address: 1 Deer Park Dr, Suite Q, Monmouth Junction, NJ 08852, USA