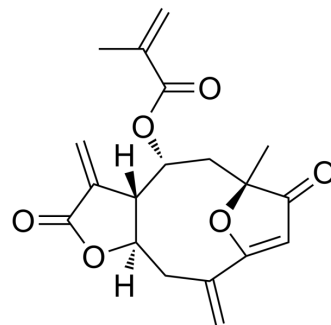


4,15-Isoatriplicolide methylacrylate

Cat. No.:	HY-N10959
CAS No.:	133559-38-3
Molecular Formula:	C ₁₉ H ₂₀ O ₆
Molecular Weight:	344.36
Target:	Others
Pathway:	Others
Storage:	Please store the product under the recommended conditions in the Certificate of Analysis.



BIOLOGICAL ACTIVITY

Description

4,15-Isoatriplicolide methylacrylate is a germacrane-type sesquiterpene lactone. 4,15-Isoatriplicolide methylacrylate also is a cytotoxic agent. 4,15-Isoatriplicolide methylacrylate has cytotoxic activity for MCF-7 human breast cancer cell line^[1].

REFERENCES

[1]. Li Pan, et al. Bioactive constituents of Helianthus tuberosus (Jerusalem artichoke). *Phytochemistry Letters* 2 (2009) 15-18.

Caution: Product has not been fully validated for medical applications. For research use only.

Tel: 609-228-6898

Fax: 609-228-5909

E-mail: tech@MedChemExpress.com

Address: 1 Deer Park Dr, Suite Q, Monmouth Junction, NJ 08852, USA