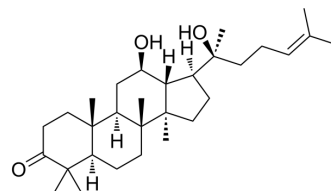


(20S)-Protopanaxadiol-3-one

Cat. No.:	HY-N10989
CAS No.:	51116-90-6
Molecular Formula:	C ₃₀ H ₅₀ O ₃
Molecular Weight:	458.72
Target:	Others
Pathway:	Others
Storage:	Please store the product under the recommended conditions in the Certificate of Analysis.



BIOLOGICAL ACTIVITY

Description

(20S)-Protopanaxadiol-3-one is a natural product found in *Melia azedarach* and *Betula pendula*^[1].

REFERENCES

[1]. Nagai, M, et al. Triterpenes of Japanese white birch and the configuration at C-24 of ocotillol II and its related compounds. *Chemical & pharmaceutical bulletin*. ISSN : 0009-2363

Caution: Product has not been fully validated for medical applications. For research use only.

Tel: 609-228-6898

Fax: 609-228-5909

E-mail: tech@MedChemExpress.com

Address: 1 Deer Park Dr, Suite Q, Monmouth Junction, NJ 08852, USA