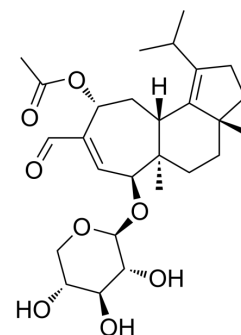


Erinacine P

Cat. No.:	HY-N11019
CAS No.:	291532-17-7
Molecular Formula:	C ₂₇ H ₄₀ O ₈
Molecular Weight:	492.6
Target:	Others
Pathway:	Others
Storage:	-20°C, protect from light * In solvent : -80°C, 6 months; -20°C, 1 month (protect from light)



BIOLOGICAL ACTIVITY

Description

Erinacine P (compound 1) is a parental metabolite of luteolin. Erinacine P can be isolated from the mycelia of basidiomycetous *Herichium erinaceum* YB4-6237. Under mild conditions, Erinacine P is able to be chemically converted to Erinacine B and then to Erinacine A^[1].

REFERENCES

[1]. Kenmoku H, et al. Isolation of erinacine P, a new parental metabolite of cyathane-xylósides, from *Herichium erinaceum* and its biomimetic conversion into erinacines A and B[J]. *Tetrahedron Letters*, 2000, 41(22): 4389-4393.

Caution: Product has not been fully validated for medical applications. For research use only.

Tel: 609-228-6898

Fax: 609-228-5909

E-mail: tech@MedChemExpress.com

Address: 1 Deer Park Dr, Suite Q, Monmouth Junction, NJ 08852, USA