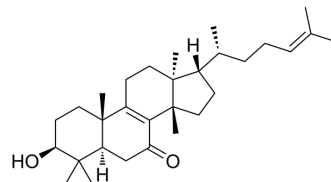


Kansene

Cat. No.:	HY-N11025
CAS No.:	543691-16-3
Molecular Formula:	C ₃₀ H ₄₈ O ₂
Molecular Weight:	440.7
Target:	Others
Pathway:	Others
Storage:	Please store the product under the recommended conditions in the Certificate of Analysis.



BIOLOGICAL ACTIVITY

Description

Kansene, a euphane-type triterpene, can be isolated from a 60% EtOH extract of *Euphorbia kansui*^[1].

REFERENCES

[1]. Wang LY, et al. Euphane and tirucallane triterpenes from the roots of *Euphorbia kansui* and their in vitro effects on the cell division of *Xenopus*. *J Nat Prod.* 2003 May;66(5):630-3.

Caution: Product has not been fully validated for medical applications. For research use only.

Tel: 609-228-6898

Fax: 609-228-5909

E-mail: tech@MedChemExpress.com

Address: 1 Deer Park Dr, Suite Q, Monmouth Junction, NJ 08852, USA