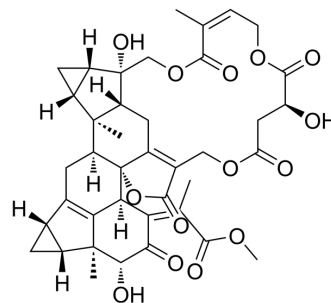


Shizukaol G

Cat. No.:	HY-N11078
CAS No.:	165171-11-9
Molecular Formula:	C ₄₀ H ₄₄ O ₁₄
Molecular Weight:	748.77
Target:	Others
Pathway:	Others
Storage:	Please store the product under the recommended conditions in the Certificate of Analysis.



BIOLOGICAL ACTIVITY

Description

Shizukaol G is a dimeric sesquiterpene. Shizukaol G can be isolated from the roots of *Chloranthus japonicus*^[1].

REFERENCES

[1]. Jun Kawabata, et al. Sesquiterpene dimers from *Chloranthus japonicus*. *Phytochemistry*. Volume 39, Issue 1, 1995, Pages 121-125.

Caution: Product has not been fully validated for medical applications. For research use only.

Tel: 609-228-6898

Fax: 609-228-5909

E-mail: tech@MedChemExpress.com

Address: 1 Deer Park Dr, Suite Q, Monmouth Junction, NJ 08852, USA