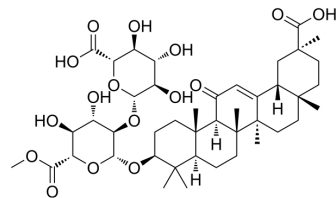


Glycyrrhizin-6'-methylester

Cat. No.:	HY-N11111
CAS No.:	1185255-36-0
Molecular Formula:	C ₄₃ H ₆₄ O ₁₆
Molecular Weight:	836.96
Target:	Others
Pathway:	Others
Storage:	-20°C, protect from light * In solvent : -80°C, 6 months; -20°C, 1 month (protect from light)



BIOLOGICAL ACTIVITY

Description

Glycyrrhizin-6'-methylester is a natural product that can be isolated from licorice (*Glycyrrhiza glabra*)^[1].

REFERENCES

[1]. Schmid C, et al. Comprehensive structure-activity-relationship studies of sensory active compounds in licorice (*Glycyrrhiza glabra*). *Food Chem.* 2021 Dec 1;364:130420.

Caution: Product has not been fully validated for medical applications. For research use only.

Tel: 609-228-6898

Fax: 609-228-5909

E-mail: tech@MedChemExpress.com

Address: 1 Deer Park Dr, Suite Q, Monmouth Junction, NJ 08852, USA