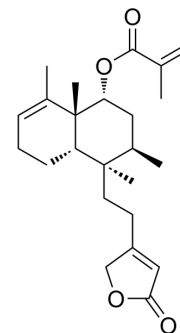


## Solidagolactone II

Cat. No.:	HY-N11139
CAS No.:	24399-43-7
Molecular Formula:	C <sub>25</sub> H <sub>36</sub> O <sub>4</sub>
Molecular Weight:	400.55
Target:	Others
Pathway:	Others
Storage:	Please store the product under the recommended conditions in the Certificate of Analysis.



### BIOLOGICAL ACTIVITY

#### Description

Solidagolactone II is a chloroalkaned diterpene isolated from *S. uirgaurea* L<sup>[1]</sup>.

### REFERENCES

[1]. Masatake Niwa, et al. Stereostructures of several solidagolactones (elongatolides). *Tetrahedron Letters*. Volume 22, Issue 29, 1981, Pages 2789-2792.

**Caution: Product has not been fully validated for medical applications. For research use only.**

Tel: 609-228-6898

Fax: 609-228-5909

E-mail: tech@MedChemExpress.com

Address: 1 Deer Park Dr, Suite Q, Monmouth Junction, NJ 08852, USA