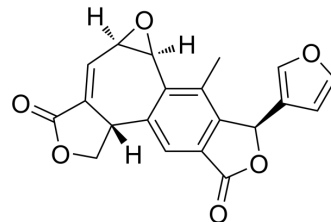


## Salvileucantholide

Cat. No.:	HY-N11664
CAS No.:	158994-33-3
Molecular Formula:	C <sub>20</sub> H <sub>14</sub> O <sub>6</sub>
Molecular Weight:	350.32
Target:	Others
Pathway:	Others
Storage:	Please store the product under the recommended conditions in the Certificate of Analysis.



### BIOLOGICAL ACTIVITY

Description	Salvileucantholide is a diterpenoid isolated from <i>S. leucantha</i> <sup>[1]</sup> .
-------------	--

### REFERENCES

[1]. Yuji Narukawa, et al. A novel diterpenoid with a rearranged neoclerodane skeleton from *Salvia leucantha* CAV. *J Nat Med.* 2006 Jul;60(3):206-209.

**Caution: Product has not been fully validated for medical applications. For research use only.**

Tel: 609-228-6898

Fax: 609-228-5909

E-mail: tech@MedChemExpress.com

Address: 1 Deer Park Dr, Suite Q, Monmouth Junction, NJ 08852, USA