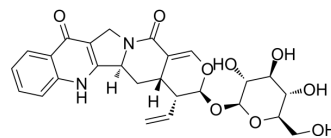


Pumiloside

Cat. No.:	HY-N11711
CAS No.:	126722-26-7
Molecular Formula:	C ₂₆ H ₂₈ N ₂ O ₉
Molecular Weight:	512.51
Target:	Cholinesterase (ChE)
Pathway:	Neuronal Signaling
Storage:	Please store the product under the recommended conditions in the Certificate of Analysis.



BIOLOGICAL ACTIVITY

Description

Pumiloside is a natural product that can be isolated from *Nauclea officinalis*. Pumiloside is a AChE inhibitor with IC₅₀ value of 118.36 μM^[1].

REFERENCES

[1]. Liew SY, et al. Natural indole butyrylcholinesterase inhibitors from *Nauclea officinalis*. *Phytomedicine*. 2015 Jan 15;22(1):45-8.

Caution: Product has not been fully validated for medical applications. For research use only.

Tel: 609-228-6898

Fax: 609-228-5909

E-mail: tech@MedChemExpress.com

Address: 1 Deer Park Dr, Suite Q, Monmouth Junction, NJ 08852, USA