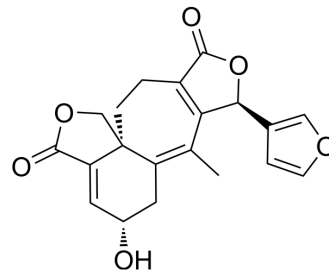


## 6,7-Dihydrosalviandulin E

Cat. No.:	HY-N11801
CAS No.:	1983982-37-1
Molecular Formula:	C <sub>20</sub> H <sub>18</sub> O <sub>6</sub>
Molecular Weight:	354.35
Target:	Others
Pathway:	Others
Storage:	Please store the product under the recommended conditions in the Certificate of Analysis.



### BIOLOGICAL ACTIVITY

#### Description

6,7-Dihydrosalviandulin E is a neo-clerodane related diterpenoid. Salvileucalin A can be isolated from the aerial parts of *S. leucantha*.<sup>[1]</sup>

### REFERENCES

[1]. Jiang Y J, Su J, Shi X, et al. neo-Clerodanes from the aerial parts of *Salvia leucantha*[J]. *Tetrahedron*, 2016, 72(35): 5507-5514.

**Caution: Product has not been fully validated for medical applications. For research use only.**

Tel: 609-228-6898

Fax: 609-228-5909

E-mail: tech@MedChemExpress.com

Address: 1 Deer Park Dr, Suite Q, Monmouth Junction, NJ 08852, USA