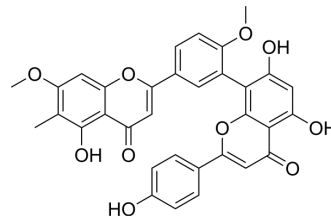


## Taiwanhomoflavone A

Cat. No.:	HY-N1183
CAS No.:	265120-00-1
Molecular Formula:	C <sub>33</sub> H <sub>24</sub> O <sub>10</sub>
Molecular Weight:	580.54
Target:	Others
Pathway:	Others
Storage:	Please store the product under the recommended conditions in the Certificate of Analysis.



### BIOLOGICAL ACTIVITY

<b>Description</b>	Taiwanhomoflavone A is a C-methylated biflavone, that can be isolated from the stem of <i>Cephalotaxus wilsoniana</i> . Taiwanhomoflavone-A shows anticancer activity <sup>[1]</sup> .
<b>In Vitro</b>	Taiwanhomoflavone A is cytotoxic with ED <sub>50</sub> values of 3.4, 1.0, 2.0 and 2.5 µg/mL, respectively, against KB epidermoid carcinoma of nasopharynx, COLO-205 colon carcinoma, Hepa-3B hepatoma, and Hela cervix tumor cells <sup>[1]</sup> . MCE has not independently confirmed the accuracy of these methods. They are for reference only.

### REFERENCES

[1]. Kuo YH, et al. A novel cytotoxic C-methylated biflavone from the stem of *Cephalotaxus wilsoniana*. Chem Pharm Bull (Tokyo). 2000 Mar;48(3):440-1.

**Caution: Product has not been fully validated for medical applications. For research use only.**

Tel: 609-228-6898

Fax: 609-228-5909

E-mail: tech@MedChemExpress.com

Address: 1 Deer Park Dr, Suite Q, Monmouth Junction, NJ 08852, USA