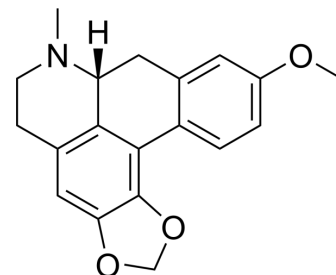


Isolaureline

| | |
|--------------------|---|
| Cat. No.: | HY-N11914 |
| CAS No.: | 475-84-3 |
| Molecular Formula: | C ₁₉ H ₁₉ NO ₃ |
| Molecular Weight: | 309.36 |
| Target: | Others |
| Pathway: | Others |
| Storage: | Please store the product under the recommended conditions in the Certificate of Analysis. |



BIOLOGICAL ACTIVITY

Description

Isolaureline can be isolated from the whole plant of *Stephania longa*^[1].

REFERENCES

[1]. Zhang H, et al. Two unusual nitro-substituted hasubanan-type alkaloids from *Stephania longa*[J]. Chinese Journal of Chemistry, 2006, 24(6): 781-784.

Caution: Product has not been fully validated for medical applications. For research use only.

Tel: 609-228-6898

Fax: 609-228-5909

E-mail: tech@MedChemExpress.com

Address: 1 Deer Park Dr, Suite Q, Monmouth Junction, NJ 08852, USA