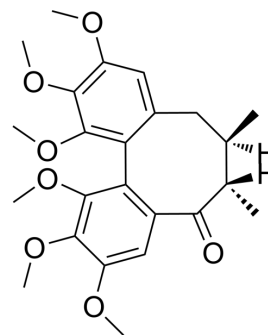


Schisantherin S

Cat. No.:	HY-N11917
CAS No.:	2230512-49-7
Molecular Formula:	C ₂₄ H ₃₀ O ₇
Molecular Weight:	430.49
Target:	Others
Pathway:	Others
Storage:	Please store the product under the recommended conditions in the Certificate of Analysis.



BIOLOGICAL ACTIVITY

Description

Schisantherin S is a dibenzocyclooctene-type lignan isolated from the stems of *Schisandra chinensis* (Kadsura)^[1].

REFERENCES

[1]. Xu L, et al. Chemical constituents of *Kadsura coccinea*[J]. *Chemistry of Natural Compounds*, 2018, 54: 242-244.

Caution: Product has not been fully validated for medical applications. For research use only.

Tel: 609-228-6898

Fax: 609-228-5909

E-mail: tech@MedChemExpress.com

Address: 1 Deer Park Dr, Suite Q, Monmouth Junction, NJ 08852, USA