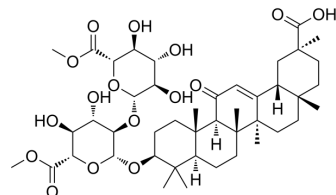


Glycyrrhizin-6',6''-dimethylester

Cat. No.:	HY-N11975
CAS No.:	114006-81-4
Molecular Formula:	C ₄₄ H ₆₆ O ₁₆
Molecular Weight:	850.99
Target:	Others
Pathway:	Others
Storage:	Please store the product under the recommended conditions in the Certificate of Analysis.



BIOLOGICAL ACTIVITY

Description

Glycyrrhizin-6',6''-dimethylester (compound 23) is a licorice saponin isolated from licorice root. Glycyrrhizin-6',6''-dimethylester can participate as an aglycone in the generation of methyl glucuronate, producing similar threshold sweetness, licorice, and bitterness^[1].

REFERENCES

[1]. Schmid C, et al. Comprehensive structure-activity-relationship studies of sensory active compounds in licorice (*Glycyrrhiza glabra*). *Food Chem.* 2021 Dec 1;364:130420.

Caution: Product has not been fully validated for medical applications. For research use only.

Tel: 609-228-6898

Fax: 609-228-5909

E-mail: tech@MedChemExpress.com

Address: 1 Deer Park Dr, Suite Q, Monmouth Junction, NJ 08852, USA