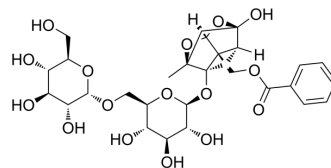


Isomaltopaeoniflorin

| | |
|--------------------|---|
| Cat. No.: | HY-N12018 |
| CAS No.: | 262350-54-9 |
| Molecular Formula: | C ₂₉ H ₃₈ O ₁₆ |
| Molecular Weight: | 642.6 |
| Target: | Others |
| Pathway: | Others |
| Storage: | Please store the product under the recommended conditions in the Certificate of Analysis. |



BIOLOGICAL ACTIVITY

Description

Isomaltopaeoniflorin is a metabolite of the Chinese herbal formula Shuyu. Shuyu is a depression-like disease inhibitor^[1].

REFERENCES

[1]. Li F, et al. Metabolic profiling of Shu-Yu capsule in rat serum based on metabolic fingerprinting analysis using HPLC-ESI-MSn[J]. Molecular Medicine Reports, 2016, 13(5): 4191-4204.

Caution: Product has not been fully validated for medical applications. For research use only.

Tel: 609-228-6898

Fax: 609-228-5909

E-mail: tech@MedChemExpress.com

Address: 1 Deer Park Dr, Suite Q, Monmouth Junction, NJ 08852, USA