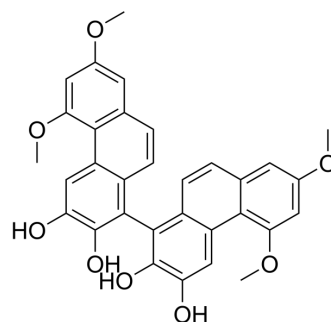


Volucrin

Cat. No.:	HY-N12020
CAS No.:	130217-31-1
Molecular Formula:	C ₃₂ H ₂₆ O ₈
Molecular Weight:	538.54
Target:	Others
Pathway:	Others
Storage:	Please store the product under the recommended conditions in the Certificate of Analysis.



BIOLOGICAL ACTIVITY

Description

Volucrin is a dimeric phenanthrene derivative that can be isolated from the orchid *Lusia volucris*^[1].

REFERENCES

[1]. Majumder P L, et al. Volucrin, a new dimeric phenanthrene derivative from the orchid *Lusia volucris*[J]. Tetrahedron, 1990, 46(10): 3621-3626.

Caution: Product has not been fully validated for medical applications. For research use only.

Tel: 609-228-6898

Fax: 609-228-5909

E-mail: tech@MedChemExpress.com

Address: 1 Deer Park Dr, Suite Q, Monmouth Junction, NJ 08852, USA