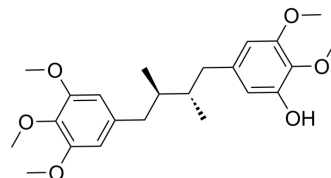


## Schisandrathera D

Cat. No.:	HY-N12048
CAS No.:	2694046-04-1
Molecular Formula:	C <sub>23</sub> H <sub>32</sub> O <sub>6</sub>
Molecular Weight:	404.5
Target:	Others
Pathway:	Others
Storage:	Please store the product under the recommended conditions in the Certificate of Analysis.



### BIOLOGICAL ACTIVITY

#### Description

Schisandrathera D is a lignan that can be isolated from *Schisandra sphenanthera*<sup>[1]</sup>.

### REFERENCES

[1]. Mai NT, et al. Chemical constituents from *Schisandra sphenanthera* and their cytotoxic activity. *Nat Prod Res.* 2021 Oct;35(20):3360-3369.

**Caution: Product has not been fully validated for medical applications. For research use only.**

Tel: 609-228-6898

Fax: 609-228-5909

E-mail: tech@MedChemExpress.com

Address: 1 Deer Park Dr, Suite Q, Monmouth Junction, NJ 08852, USA