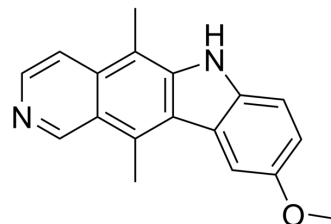


SMU-CX1

Cat. No.:	HY-N12110
CAS No.:	10371-86-5
Molecular Formula:	C ₁₈ H ₁₆ N ₂ O
Molecular Weight:	276.33
Target:	Toll-like Receptor (TLR); SARS-CoV
Pathway:	Immunology/Inflammation; Anti-infection
Storage:	Please store the product under the recommended conditions in the Certificate of Analysis.



BIOLOGICAL ACTIVITY

Description

SMU-CX1 is a specific TLR3 inhibitor (IC₅₀: 0.11 μM) with IC₅₀ ranging from 0.14-0.33 μM against multiple influenza A virus subtypes. SMU-CX1 inhibits the viral PB2 and NP proteins with an IC₅₀ of 0.43 μM for SARS-CoV-2 activity. SMU-CX1 also inhibits inflammatory factors in host cells, including IFN-β, IP-10, and CCL-5^[1].

REFERENCES

[1]. Pan Y, et al. Discovery of an ellipticine derivative as TLR3 inhibitor against influenza A virus and SARS-CoV-2. *Bioorg Med Chem Lett*. 2024 Mar 15;101:129672.

Caution: Product has not been fully validated for medical applications. For research use only.

Tel: 609-228-6898

Fax: 609-228-5909

E-mail: tech@MedChemExpress.com

Address: 1 Deer Park Dr, Suite Q, Monmouth Junction, NJ 08852, USA