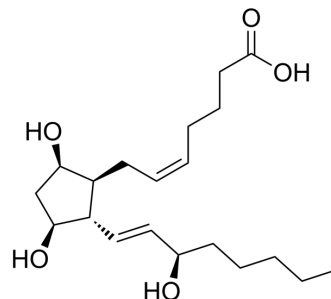


## ent-Prostaglandin F2 $\alpha$

Cat. No.:	HY-N12119
CAS No.:	54483-31-7
Molecular Formula:	C <sub>20</sub> H <sub>34</sub> O <sub>5</sub>
Molecular Weight:	354.48
Target:	Endogenous Metabolite
Pathway:	Metabolic Enzyme/Protease
Storage:	Please store the product under the recommended conditions in the Certificate of Analysis.



### BIOLOGICAL ACTIVITY

#### Description

ent-Prostaglandin F2 $\alpha$  is the opposite enantiomer of PGF2 $\alpha$ . ent-Prostaglandin F2 $\alpha$  can be found in urine<sup>[1]</sup>.

### REFERENCES

[1]. Yin H, et al. Urinary prostaglandin F2 $\alpha$  is generated from the isoprostane pathway and not the cyclooxygenase in humans. J Biol Chem. 2007 Jan 5;282(1):329-36.

**Caution: Product has not been fully validated for medical applications. For research use only.**

Tel: 609-228-6898

Fax: 609-228-5909

E-mail: tech@MedChemExpress.com

Address: 1 Deer Park Dr, Suite Q, Monmouth Junction, NJ 08852, USA