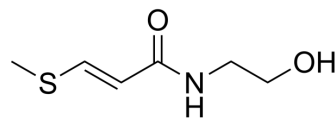


Entadamide A

Cat. No.:	HY-N12125
CAS No.:	100477-88-1
Molecular Formula:	C ₆ H ₁₁ NO ₂ S
Molecular Weight:	161.22
Target:	Others
Pathway:	Others
Storage:	-20°C, protect from light * In solvent : -80°C, 6 months; -20°C, 1 month (protect from light)



BIOLOGICAL ACTIVITY

Description

Entadamide A (compound 1) is a tryptophan derivative. Entadamide A prevents tryptophan depletion by inhibiting indoleamine 2, 3-dioxygenase (IDO), thereby inhibiting HIV replication. Entadamide A can be used in drug and neuropsychiatric studies of redesivir [1].

REFERENCES

[1]. Nzowa LK, et al. Two new tryptophan derivatives from the seed kernels of *Entada rheedei*: effects on cell viability and HIV infectivity. *Fitoterapia*. 2013 Jun;87:37-42.

Caution: Product has not been fully validated for medical applications. For research use only.

Tel: 609-228-6898

Fax: 609-228-5909

E-mail: tech@MedChemExpress.com

Address: 1 Deer Park Dr, Suite Q, Monmouth Junction, NJ 08852, USA