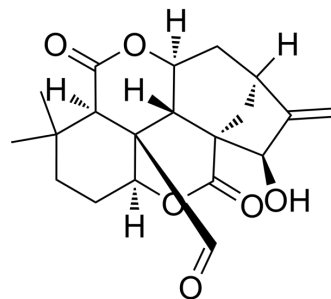


## 15 $\alpha$ -Hydroxy-20-oxo-6,7-seco-ent-kaur-16-en-1,7 $\alpha$ (6,11 $\alpha$ )-diolide

|                    |   |
|--------------------|---|
| Cat. No.:          | HY-N12135   |
| CAS No.:           | 1355450-84-8  |
| Molecular Formula: | C <sub>20</sub> H <sub>24</sub> O <sub>6</sub>  |
| Molecular Weight:  | 360.4   |
| Target:            | Others  |
| Pathway:           | Others  |
| Storage:           | Please store the product under the recommended conditions in the Certificate of Analysis. |



### BIOLOGICAL ACTIVITY

#### Description

15 $\alpha$ -Hydroxy-20-oxo-6,7-seco-ent-kaur-16-en-1,7 $\alpha$ (6,11 $\alpha$ )-diolide (compound 2) is an enantio-kaurene diterpenoid (ent-kaurene diterpenoid), which can be isolated from *Rubescens rubescens*. 15 $\alpha$ -Hydroxy-20-oxo-6,7-seco-ent-kaur-16-en-1,7 $\alpha$ (6,11 $\alpha$ )-diolide has cellular activity against EC-1, U87, A549, MCF-7 and HeLa cell lines Toxicity, IC<sub>50</sub>s are 37.69  $\mu$ M, 79.362  $\mu$ M, 80.07  $\mu$ M, 197.35  $\mu$ M, 462.13  $\mu$ M, and 180.09  $\mu$ M respectively<sup>[1]</sup>.

### REFERENCES

[1]. Xie RJ, et al. Two new diterpenoids and other constituents from *Isodon rubescens*. *Fitoterapia*. 2011 Jun;82(4):726-30.

**Caution: Product has not been fully validated for medical applications. For research use only.**

Tel: 609-228-6898

Fax: 609-228-5909

E-mail: tech@MedChemExpress.com

Address: 1 Deer Park Dr, Suite Q, Monmouth Junction, NJ 08852, USA