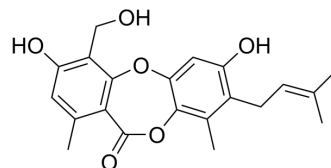


## Mollicellin I

Cat. No.:	HY-N12200
CAS No.:	1016605-29-0
Molecular Formula:	C <sub>21</sub> H <sub>22</sub> O <sub>6</sub>
Molecular Weight:	370.4
Target:	Others
Pathway:	Others
Storage:	Please store the product under the recommended conditions in the Certificate of Analysis.



### BIOLOGICAL ACTIVITY

#### Description

Mollicellin I (compound 1) is a depsidone. The growth inhibitory activity of Mollicellin I on human breast cancer (Bre04), human lung (Lu04) and human neuroma (N04) cell lines is not significant, with GI<sub>50</sub>s >10 µg/mL<sup>[1]</sup>.

### REFERENCES

[1]. Li G Y, et al. Secondary metabolites from the fungus *Chaetomium brasiliense*[J]. *Helvetica Chimica Acta*, 2008, 91(1): 124-129.

**Caution: Product has not been fully validated for medical applications. For research use only.**

Tel: 609-228-6898

Fax: 609-228-5909

E-mail: tech@MedChemExpress.com

Address: 1 Deer Park Dr, Suite Q, Monmouth Junction, NJ 08852, USA