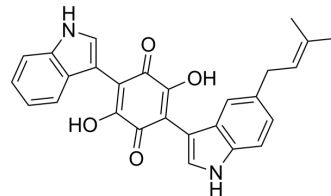


Semicochliodinol

Cat. No.:	HY-N12206
CAS No.:	194224-72-1
Molecular Formula:	C ₂₇ H ₂₂ N ₂ O ₄
Molecular Weight:	438.47
Target:	Others
Pathway:	Others
Storage:	Please store the product under the recommended conditions in the Certificate of Analysis.



BIOLOGICAL ACTIVITY

Description

Semicochliodinol can be isolated from rice cultures of the fungus genus *Chaetomium*^[1].

REFERENCES

[1]. Xu GB, et al. Indole Alkaloids from *Chaetomium globosum*. *J Nat Prod.* 2015 Jul 24;78(7):1479-85.

Caution: Product has not been fully validated for medical applications. For research use only.

Tel: 609-228-6898

Fax: 609-228-5909

E-mail: tech@MedChemExpress.com

Address: 1 Deer Park Dr, Suite Q, Monmouth Junction, NJ 08852, USA