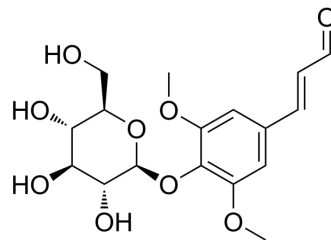


Sinapaldehyde glucoside

Cat. No.:	HY-N1242
CAS No.:	154461-65-1
Molecular Formula:	C ₁₇ H ₂₂ O ₉
Molecular Weight:	370.35
Target:	Others
Pathway:	Others
Storage:	Please store the product under the recommended conditions in the Certificate of Analysis.



BIOLOGICAL ACTIVITY

Description

Sinapaldehyde glucoside is a phenolic compound that can be isolated from the bark of *Phellodendron amurense*^[1].

REFERENCES

[1]. Ida Y, et al. Phenolic constituents of *Phellodendron amurense* bark[J]. *Phytochemistry*, 1993, 35(1): 209-215.

Caution: Product has not been fully validated for medical applications. For research use only.

Tel: 609-228-6898

Fax: 609-228-5909

E-mail: tech@MedChemExpress.com

Address: 1 Deer Park Dr, Suite Q, Monmouth Junction, NJ 08852, USA