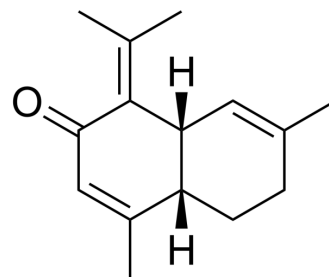


## Comosone II

Cat. No.:	HY-N12455
CAS No.:	1142922-55-1
Molecular Formula:	C <sub>15</sub> H <sub>20</sub> O
Molecular Weight:	216.32
Target:	Others
Pathway:	Others
Storage:	Please store the product under the recommended conditions in the Certificate of Analysis.



### BIOLOGICAL ACTIVITY

Description	1142922-55-1
-------------	--------------

### REFERENCES

[1]. Ahmed Hamdi OA, et al. Cytotoxic constituents from the rhizomes of *Curcuma zedoaria*. *ScientificWorldJournal*. 2014;2014:321943.

**Caution: Product has not been fully validated for medical applications. For research use only.**

Tel: 609-228-6898

Fax: 609-228-5909

E-mail: tech@MedChemExpress.com

Address: 1 Deer Park Dr, Suite Q, Monmouth Junction, NJ 08852, USA