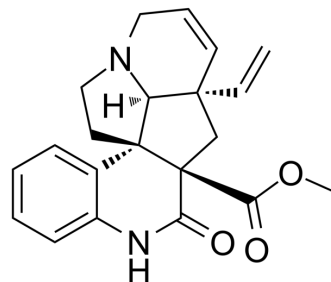


## Scandine

Cat. No.:	HY-N1248
CAS No.:	24314-59-8
Molecular Formula:	C <sub>21</sub> H <sub>22</sub> N <sub>2</sub> O <sub>3</sub>
Molecular Weight:	350.41
Target:	Others
Pathway:	Others
Storage:	Please store the product under the recommended conditions in the Certificate of Analysis.



## BIOLOGICAL ACTIVITY

### Description

Scandine is an alkaloid compound isolated from the twigs and leaves of *Melodinus suaveolens*<sup>[1]</sup>.

## REFERENCES

[1]. Ting-Ting Zhang, et al. Alkaloids from *Melodinus suaveolens*.

**Caution: Product has not been fully validated for medical applications. For research use only.**

Tel: 609-228-6898

Fax: 609-228-5909

E-mail: tech@MedChemExpress.com

Address: 1 Deer Park Dr, Suite Q, Monmouth Junction, NJ 08852, USA