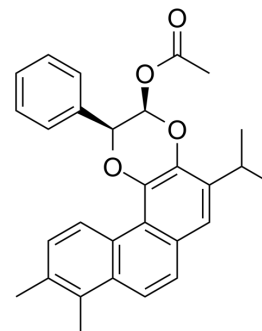


PD-1/PD-L1-IN-38

Cat. No.:	HY-N12537
Molecular Formula:	C ₂₉ H ₂₈ O ₄
Molecular Weight:	440.53
Target:	PD-1/PD-L1
Pathway:	Immunology/Inflammation
Storage:	Please store the product under the recommended conditions in the Certificate of Analysis.



BIOLOGICAL ACTIVITY

Description

PD-1/ PD-L1-in-38 is a PD-1/PD-L1 inhibitor, which can inhibit the proliferation of tumor cells, promote the secretion of INF- γ by CD8⁺ T cells, and inhibit the ability of PD-1/PD-L1 signal transduction. PD-1/PD-L1-IN-38 has antitumor activity^[1].

REFERENCES

[1]. Li Z, et al. Discovery of Natural Ah Receptor Antagonists from *Salvia miltiorrhiza* Bunge and Synthesis of Analogs for Tumor Immunotherapy. *J Med Chem.* 2024 Jan 4.

Caution: Product has not been fully validated for medical applications. For research use only.

Tel: 609-228-6898

Fax: 609-228-5909

E-mail: tech@MedChemExpress.com

Address: 1 Deer Park Dr, Suite Q, Monmouth Junction, NJ 08852, USA