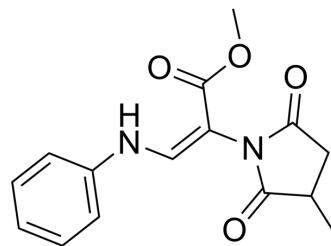


## Sydowimide A

Cat. No.:	HY-N12613
Molecular Formula:	C <sub>15</sub> H <sub>16</sub> N <sub>2</sub> O <sub>4</sub>
Molecular Weight:	288.3
Target:	Phosphatase
Pathway:	Metabolic Enzyme/Protease
Storage:	Please store the product under the recommended conditions in the Certificate of Analysis.



### BIOLOGICAL ACTIVITY

#### Description

Sydowimide A is a potent inhibitor of Src homology region 2 domain-containing phosphatase-1 (SHP1), T-cell protein tyrosine phosphatase (TCPTP) and leukocyte common antigen (CD45), with IC<sub>50</sub> values of 1.5, 2.4 and 18.83 μM, respectively [1].

### REFERENCES

[1]. Xuan Shi, et al. Chemical Epigenetic Regulation Secondary Metabolites Derived from *Aspergillus sydowii* DL1045 with Inhibitory Activities for Protein Tyrosine Phosphatases. *Molecules*. 2024 Jan 31;29(3):670.

**Caution: Product has not been fully validated for medical applications. For research use only.**

Tel: 609-228-6898

Fax: 609-228-5909

E-mail: tech@MedChemExpress.com

Address: 1 Deer Park Dr, Suite Q, Monmouth Junction, NJ 08852, USA