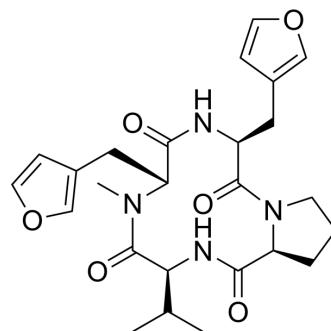


Endolide F

Cat. No.:	HY-N12638
Molecular Formula:	C ₂₅ H ₃₂ N ₄ O ₆
Molecular Weight:	484.54
Target:	Vasopressin Receptor
Pathway:	GPCR/G Protein
Storage:	Please store the product under the recommended conditions in the Certificate of Analysis.



BIOLOGICAL ACTIVITY

Description

Endolide F (Compound 2) is a proline-containing lactone. Endolide F is a moderate antagonist of the arginine antidiuretic hormone V1A receptor^[1].

REFERENCES

[1]. Berger T, et al. A MassQL-Integrated Molecular Networking Approach for the Discovery and Substructure Annotation of Bioactive Cyclic Peptides. J Nat Prod. 2024 Feb 22.

Caution: Product has not been fully validated for medical applications. For research use only.

Tel: 609-228-6898

Fax: 609-228-5909

E-mail: tech@MedChemExpress.com

Address: 1 Deer Park Dr, Suite Q, Monmouth Junction, NJ 08852, USA